

GOSPEL TIME

1. Go Down Mozes

arr. Wim Stalman

Introduction

Musical notation for the introduction of 'Go Down Mozes'. It consists of a single staff in G major (one sharp) and 2/4 time. The melody starts with a half note G4, followed by quarter notes A4, B4, and C5. There is a measure rest, then quarter notes B4, A4, and G4. This is followed by quarter notes F#4, E4, and D4. The piece ends with a half note G4. Dynamics are marked *mf* at the beginning and *f* at the end.

6

Choral

Musical notation for the first line of the choral part. It starts with a half note G4, followed by quarter notes A4, B4, and C5. There is a measure rest, then quarter notes B4, A4, and G4. The line ends with a half note G4.

13

Musical notation for the second line of the choral part. It starts with quarter notes G4, A4, B4, and C5. There is a measure rest, then quarter notes B4, A4, and G4. This is followed by quarter notes F#4, E4, and D4. The line ends with a half note G4.

20

Musical notation for the third line of the choral part. It starts with a measure rest, then quarter notes G4, A4, B4, and C5. There is a measure rest, then quarter notes B4, A4, and G4. This is followed by quarter notes F#4, E4, and D4. The line ends with a half note G4.

2. Swing Low

arr. André Waignein

Introduction

Musical notation for the introduction of 'Swing Low'. It consists of a single staff in G major (one sharp) and 2/4 time. The melody starts with a half note G4, followed by quarter notes A4, B4, and C5. There is a measure rest, then quarter notes B4, A4, and G4. This is followed by quarter notes F#4, E4, and D4. The piece ends with a half note G4. Dynamics are marked *mf* at the beginning. There are two slurs under the second and third lines of the introduction.

Choral

6

Musical notation for the first line of the choral part. It starts with a half note G4, followed by quarter notes A4, B4, and C5. There is a measure rest, then quarter notes B4, A4, and G4. This is followed by quarter notes F#4, E4, and D4. The line ends with a half note G4.

11

Musical notation for the second line of the choral part. It starts with a half note G4, followed by quarter notes A4, B4, and C5. There is a measure rest, then quarter notes B4, A4, and G4. This is followed by quarter notes F#4, E4, and D4. The line ends with a half note G4.

16

Musical notation for the third line of the choral part. It starts with a half note G4, followed by quarter notes A4, B4, and C5. There is a measure rest, then quarter notes B4, A4, and G4. This is followed by quarter notes F#4, E4, and D4. The line ends with a half note G4.

3. Nobody Knows

arr. Wim Stalman

Introduction



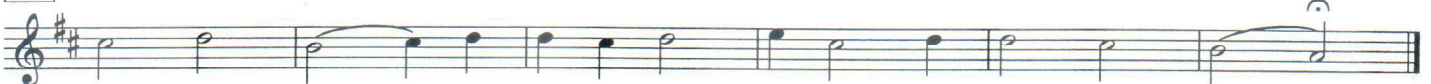
9 Choral



14



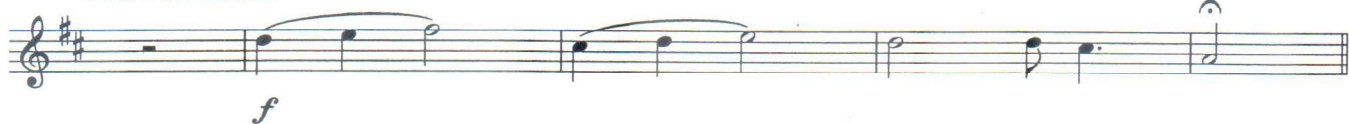
19



4. He's Got The Whole World

arr. Wim Stalman

Introduction



5 Choral



9

